

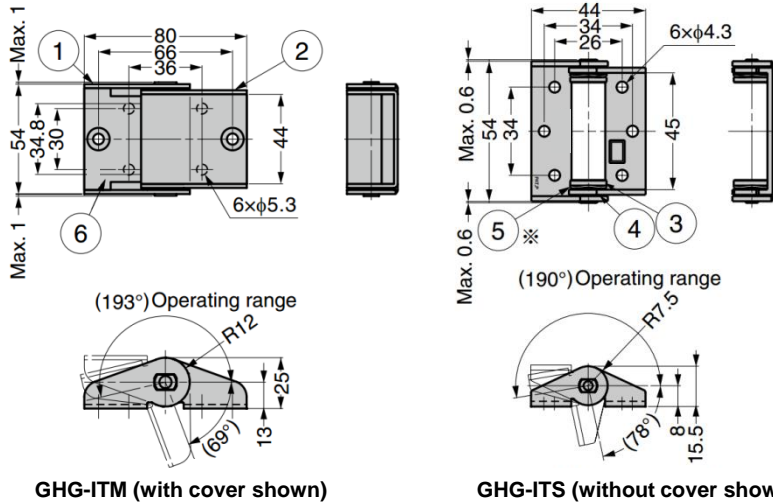
GHG-IT Stainless Steel Torque Hinge

Features

- Hinge with friction torque holds lid / door in desired position
- Cover (sold separately) of the same colour with body conceals mounting holes for clean appearance
- Labelled to indicate / differentiate torque value
- Torque free type (GHG-ITSF, GHG-ITMF) also available. Possible to mix "torque type" and "torque free type" as a pair to achieve desired torque range
- Passed 20,000 life cycle test

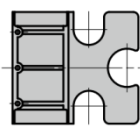
Notes

- Operating temperature: -10°C ~ 50°C
- Ensure hinge shafts are aligned during installation

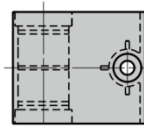


GHG-ITM (with cover shown)

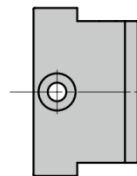
GHG-ITS (without cover shown)



Cover A



Cover B



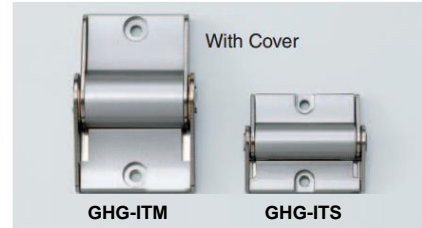
Cover C

Hinge

| Part No. | Torque (per piece) | |
|-----------|--------------------|------------------------|
| GHG-ITS25 | 2.5 N.m $\pm 20\%$ | 25.5 kgf.cm $\pm 20\%$ |
| GHG-ITS35 | 3.5 N.m $\pm 20\%$ | 35.7 kgf.cm $\pm 20\%$ |
| GHG-ITM50 | 5.0 N.m $\pm 20\%$ | 51.0 kgf.cm $\pm 20\%$ |
| GHG-ITM70 | 7.0 N.m $\pm 20\%$ | 71.4 kgf.cm $\pm 20\%$ |
| GHG-ITSF | - | - |
| GHG-ITMF | - | - |

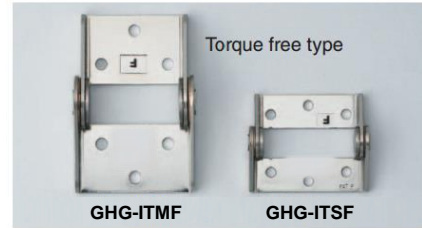
Cover (Sold Separately)

| Part No. | Cover For |
|----------|-----------|
| GHG-ITSC | GHG-ITS |
| GHG-ITMC | GHG-ITM |



GHG-ITM

GHG-ITS



GHG-ITMF

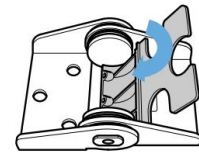
GHG-ITSF



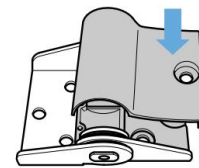
GHG-ITM50

GHG-ITS35

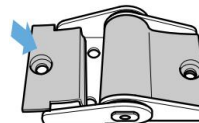
How to Install Cover



1. Insert the cover A under the hinge shaft



2. Put the cover B on the cover A



3. Put the cover C

| No. | Part Name | Material | Finish / Colour |
|-----|---------------|--------------------------|-------------------------------|
| ① | Base | Stainless Steel | Barrel Polished |
| ② | Bracket | (SUS304) | |
| ③ | Shaft | Stainless Steel (SUS303) | Plain |
| ④ | Washer | Bronze | Barrel Polished |
| ⑤ | Spring Washer | Steel | Nickel |
| ⑥ | Cover | ABS | Metallic Silver Paint / Clear |

*⑤: Only for GHG-ITS and GHG-ITM (not provided for torque free type)